



SAMPSON COUNTY
911 & ES
FACILITIES

CLINTON,
NORTH CAROLINA

CONSTRUCTION
DOCUMENTS

AREA 1 LIGHTING
PLAN

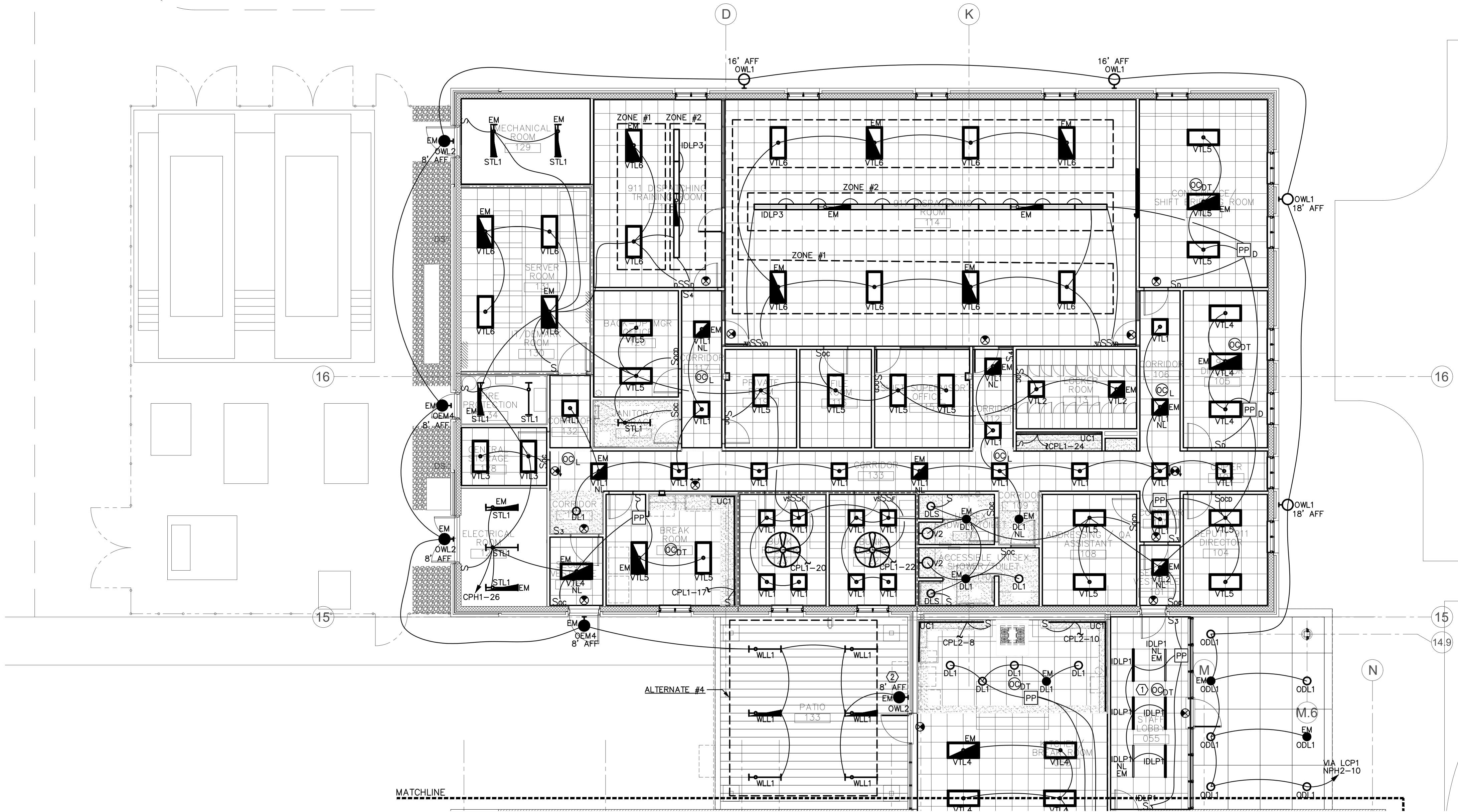
DATE	12.04.2020	
PROJECT NO	20003	
REVISIONS		
NUM.	DATE	DESCRIPTION:

THIS DRAWING IS THE PROPERTY OF ADW ARCHITECTS, P.A. AND SHALL NOT BE REPRODUCED OR COPIED IN WHOLE OR IN PART. IT SHALL NOT BE USED ON ANY OTHER PROJECT OR GIVEN TO ANY OTHER COMPANY OR AGENCY WITHOUT THE CONSENT OF ADW ARCHITECTS, P.A.



SEAL

SHEET NUMBER
E101



1 AREA 1 FLOOR PLAN - LIGHTING
1/8" = 1'-0"

GENERAL NOTES
(APPLY TO THIS SHEET ONLY)

- ALL NIGHT LIGHTS AND EXIT SIGNS TO BE CIRCUITED TO LIGHTING CIRCUIT AHEAD OF ALL SWITCHING.
- ALL EMERGENCY FIXTURES (INCLUDING THOSE DESIGNATED AS 'NL' NIGHTLIGHT) SHALL BE PROVIDED WITH BATTERY BACKUP.
- ALL SHOWER LIGHTS SHALL BE ON SEPARATE MANUAL CONTROL SWITCH IN LOCATION SHOWN. DO NOT CIRCUIT SHOWER LIGHTS TO BE CONTROLLED BY ROOM OCCUPANCY SENSOR(S).
- ALL PENETRATIONS THROUGH CONSTRUCTION BOUNDARIES OF ROOMS PROTECTED BY CLEAN AGENT FIRE SUPPRESSION SYSTEMS SHALL BE SEALED GAS-TIGHT BY THE CONTRACTOR RESPONSIBLE FOR THE PENETRATIONS PRIOR TO FIRE SUPPRESSION SYSTEM ACCEPTANCE TEST. COORDINATE WITH ALL AFFECTED TRADES. IF THE SYSTEM DOES NOT PASS THE TEST, RESEAL PENETRATIONS AND RETEST UNTIL SYSTEM PASSES. CONTRACTOR(S) RESPONSIBLE FOR LEAKING PENETRATION(S) SHALL BEAR ANY COSTS ASSOCIATED WITH RETESTING THE FIRE SUPPRESSION SYSTEM.
- HEIGHTS OF EXTERIOR FIXTURES ARE TO BE MEASURED FROM FINISHED FLOOR TO BOTTOM OF FIXTURE.

KEYED NOTES
(APPLY TO THIS SHEET ONLY)

- HEIGHTS OF FIXTURES VARY IN THIS SPACE. VERIFY MOUNTING HEIGHTS OF ALL FIXTURES IN THIS SPACE WITH ARCHITECT PRIOR TO ORDERING TO ENSURE CORRECT SUSPENSION LENGTH KITS.
- WALLPACK LIGHT IS TO BE PART OF THE BASE BID. IF ALTERNATE #4 (PATIO CANOPY) IS ACCEPTED, THIS FIXTURE SHALL BE REMOVED.

